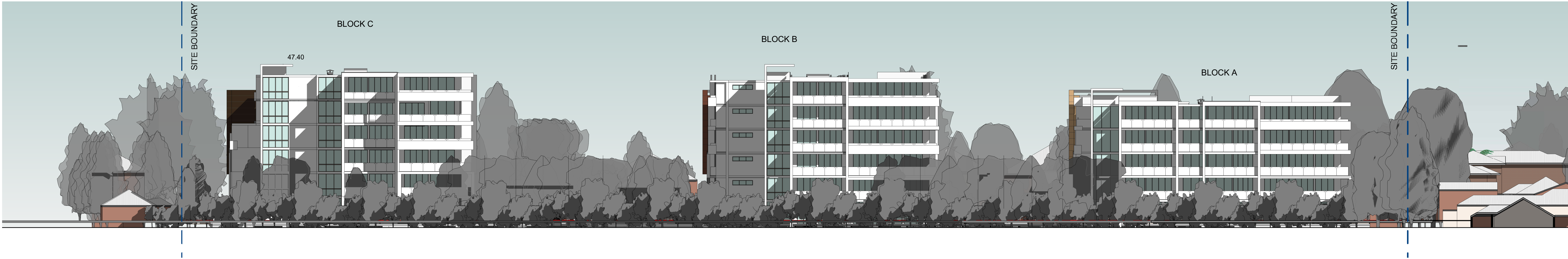


2 GARFIELD STREET
1 : 250

PROPOSED S96



1 CUMBERLAND HIGHWAY ELEVATION
1 : 250

PROPOSED S96

REV	DATE	DESCRIPTION	BY
R01	29/11/17	ISSUED FOR S96	

GENERAL NOTES:
THIS DRAWING IS THE EXCLUSIVE PROPERTY OF THE DEVELOPER & THE REPRODUCTION OF ANY PART WITHOUT THE PRIOR WRITTEN CONSENT OF THE DEVELOPER IS A VIOLATION OF APPLICABLE LAWS. IN NO EVENT SHALL THE DEVELOPER BE HELD LIABLE FOR SPECIAL, COLLATERAL, INCIDENTAL OR CONSEQUENTIAL LIABILITY IN CONNECTION WITH THE USE OF THIS DIGITAL DATA ONCE RELEASED FROM THE DEVELOPER'S OFFICE. THIS DRAWING IS TO BE READ & UNDERSTOOD IN CONJUNCTION WITH THE STRUCTURAL, MECHANICAL, ELECTRICAL & / OR ANY OTHER CONSULTANT'S DOCUMENTATION AS MAY BE APPLICABLE TO THE PROJECT PRIOR TO THE START OF ANY WORKS AND FOR ITS DURATION.

NORTH:



PROJECT:
GARFIELD STREET
31, 33 & 37B Garfield Street,
Wentworthville

DRAWING TITLE:
STREETSCAPE ELEVATION

S96 ISSUE			
PROJECT No. -	DATE 29/11/17	DRAWING No. S96-008	REV. R01
DRAWN BY: NH	SCALE: 1 : 250		ISSUED BY:
C:\Users\bjian\Documents\Garfield St 31-37B Basement_SF_V16_bjian.rvt			